
Llywodraeth Cymru
Welsh Government
www.cymru.gov.uk

Public Service Reform


Piers Bisson
Deputy Director, Public Service Reform

Tel: 029 2082 5170
E-mail: piers.bisson@wales.gsi.gov.uk


Llywodraeth Cymru
Welsh Government
www.cymru.gov.uk

Agenda

- Background
- Challenges
- Delivery & reform
- Enabling & supporting
- Footprint for regional collaboration
- Governance & leadership
- How can I benefit / contribute?


Llywodraeth Cymru
Welsh Government
www.cymru.gov.uk

Background

- Ethos
 - Collaboration & co-operation
 - Citizen-focussed
- Origins of approach lie in 2006 Beecham Report, which identified key issues to focus on:
 - Culture
 - Complexity
 - Capacity

Challenges

- Falling budgets
 - IFS: 94%
- Rising demand and expectations
 - Economic
 - Social (demographic trends, inequalities)
 - Environmental
- And opportunities?
 - Technology



Llywodraeth Cymru
Welsh Government

www.cymru.gov.uk

Delivery & Reform

- Programme for Government



- Education – Thomas Review
- Sustainable Social Services
- Together for Health
- Simpson Report & Compact
- Single Environmental Body
- Economic Renewal
- Plus...



Llywodraeth Cymru
Welsh Government

www.cymru.gov.uk

Enabling & supporting


- Developing collective leadership to:
 - Work as 'one public service'
 - Support major service reforms
 - Ensure coherence
 - Identify and realise cross-cutting opportunities for improving services & reducing costs
- Themes
 - Accountability (to elected leaders, to the public, and to each other)
 - Simplification (e.g. Partnership & Plan Rationalisation)
 - Collaboration



Llywodraeth Cymru
Welsh Government

www.cymru.gov.uk

Footprint for Regional Collaboration



Ulywodraeth Cymru
Welsh Government

www.cymru.gov.uk

Governance & Leadership


- Nationally
 - Reformed Partnership Council for Wales
 - Workforce Partnership Council (& others)
 - Public Service Leadership Group
 - Wider leadership community
- Regionally
- Locally
 - Local Service Boards

Ulywodraeth Cymru
Welsh Government

www.cymru.gov.uk

Governance – PSLG

- 3 national work programmes
 - Asset Management & Procurement
 - Effective Services for Vulnerable Groups
 - Organisational Development & Simpson Implementation
- Regional collaboration leaders
- Public service partners
- Measurement Framework
 - Avoiding target-driven distortions



Ulywodraeth Cymru
Welsh Government

www.cymru.gov.uk

How can I benefit / contribute?



Llywodraeth Cymru
Welsh Government

www.cymru.gov.uk

- A collective leadership challenge
- An opportunity for individuals and organisations
 - What does this mean for me / my organisation?
 - Do I / we have insight or expertise to contribute?

Annex



Llywodraeth Cymru
Welsh Government

www.cymru.gov.uk

<http://wales.gov.uk/topics/improvingservices/?lang=en>

Asset Management and Procurement



Llywodraeth Cymru
Welsh Government

www.cymru.gov.uk

- Asset Management
 - Map estate (e-PIMS) and exploit
 - Co-location and asset rationalisation
 - 9 pilot projects
- Procurement
 - National service for common and repetitive spend
 - Uptake & use of xchangewales e-procurement tools
 - Simplify and standardise procurement practice
 - Use of collaborative procurement agreements

Effective Services for Vulnerable Groups

- Adoption of identified good practice (better outcomes, lower costs)
 - NEETs
 - Team around the family
 - Independent living for frail and elderly

- Identify effective practices in new areas
 - Domestic abuse
 - Missing people
 - Substance misuse
 - Citizen-directed support



www.cymru.gov.uk

Organisational Development & Simpson Implementation

- Organisational development
 - Sharing corporate functions
 - Lean / systems thinking
 - New ways of working (agile)

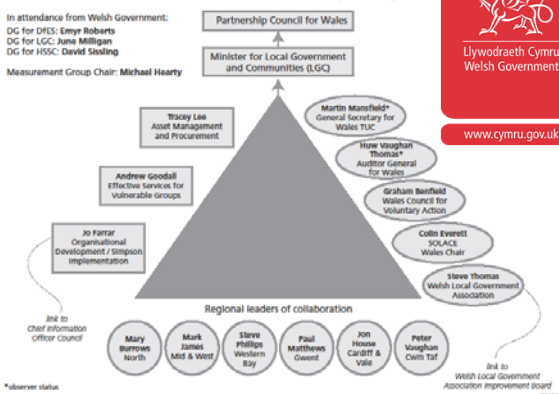
- Simpson Implementation
 - Coherence
 - Delivery



www.cymru.gov.uk

Public Service Leadership Group

In attendance from Welsh Government:
 DG for DFES: Emyr Roberts
 DG for LGC: Ane Molligan
 DG for HSSC: David Sisling
 Measurement Group Chair: Michael Haarty



www.cymru.gov.uk

* Observer status
 Note: Jack Straw is succeeding Jo Farrar as Chair of the Organisational Development and Simpson Implementation work programme
