



Creating sporting opportunities in every community

APSE Southern and South West Sports and Leisure Advisory Group

Wednesday 22nd July 2009

Sport England's Facilities Improvement Service

John Feetam
Strategic Planner

Facilities Improvement Service (FIS)

- Introduction

Working with local authorities' to raise the bar in the strategic planning of sports facilities.

- Launched in 2007
- Three year targeted programme
- Designated support to local authorities
- Develop authority wide and tailor-made approaches
- Produce a robust and defensible needs led evidence base
- Facilitate the application of Sport England's strategic planning tools
- To build skills and capacity
- To disseminate good practice

Facilities Improvement Service (FIS)

- Drivers

The drivers behind the establishment of the FIS include:

- Recognition of the need to improve strategic planning for sports provision (Audit Commission 2006, CLG 2007).
- The need for a robust evidence base for open space, sport and recreation to support Local Development Frameworks.
- The need to address the age and quality of sports facilities.
- Contribution of sport to the health, wellbeing and obesity agenda.
- Opportunities available within educational build programmes (e.g. BSF).
- Proposals for new housing growth (growth areas/points).
- London 2012

Facilities Improvement Service (FIS)

- Progress

81 local authorities to have been engaged in the FIS by the end of 2010-2011

- Nine pilot local authorities established in 2007
- Nine local authorities per region
- 54 local authorities by end of 09/10

Case Studies:

- London Borough of Brent
- Swindon Borough Council
- Southampton City Council

Facilities Improvement Service (FIS)

- London Borough of Brent

- Pilot Authority
- Some of the lowest participation rates within London
- Little investment in the Borough's sporting infrastructure
- Fragmented approach to strategic planning

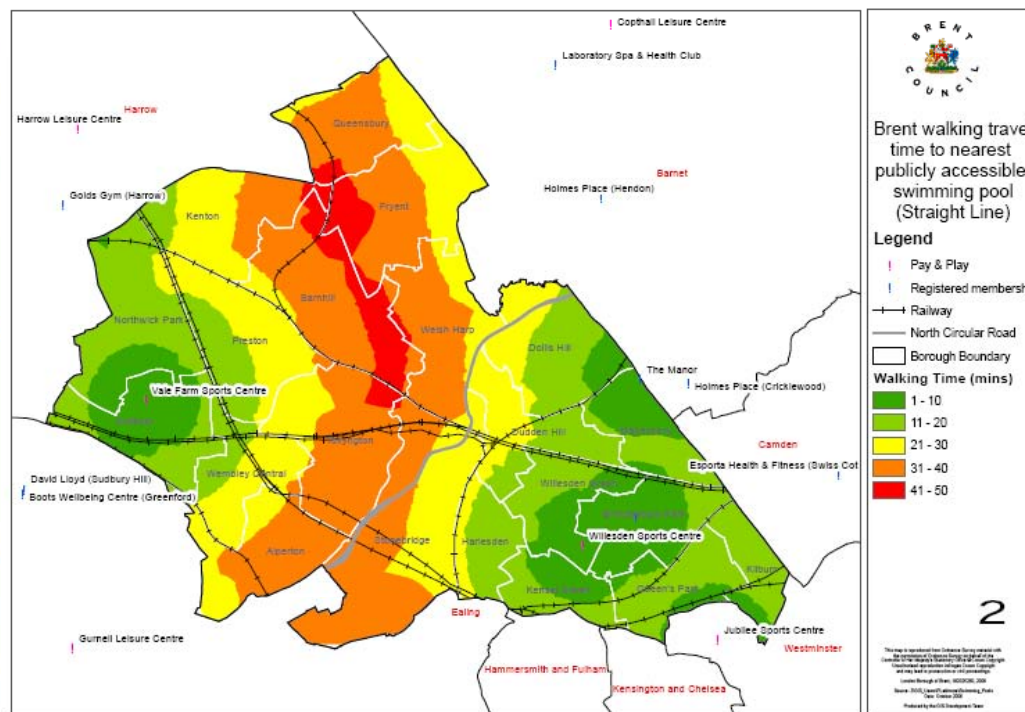
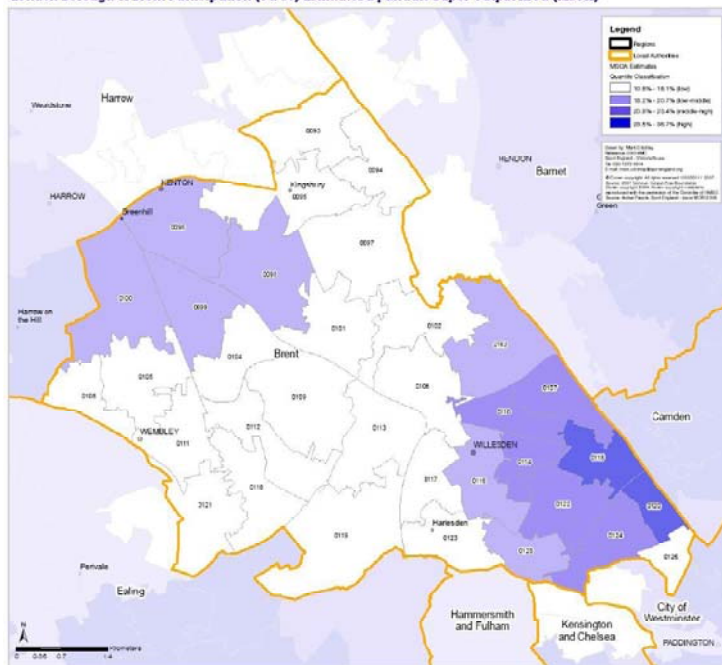
- Development of local standards and infrastructure requirements
- Ensuring sufficient quality and distribution of provision
- Use of the Facilities Planning Model
- Informing the BSF programme
- A framework to assist in seeking developer contributions

- Positive feedback from the LGA

Facilities Improvement Service (FIS)

- London Borough of Brent

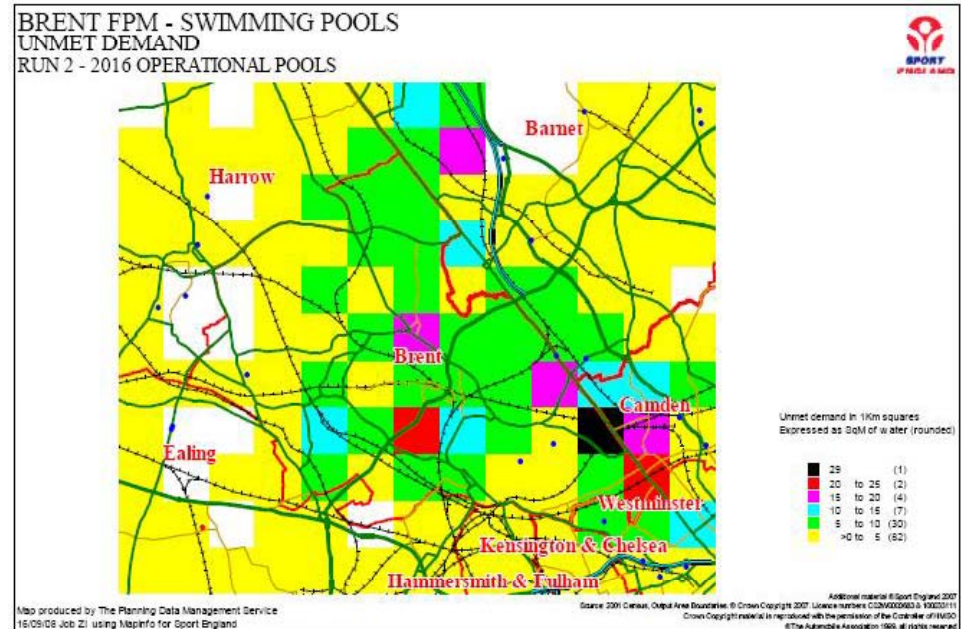
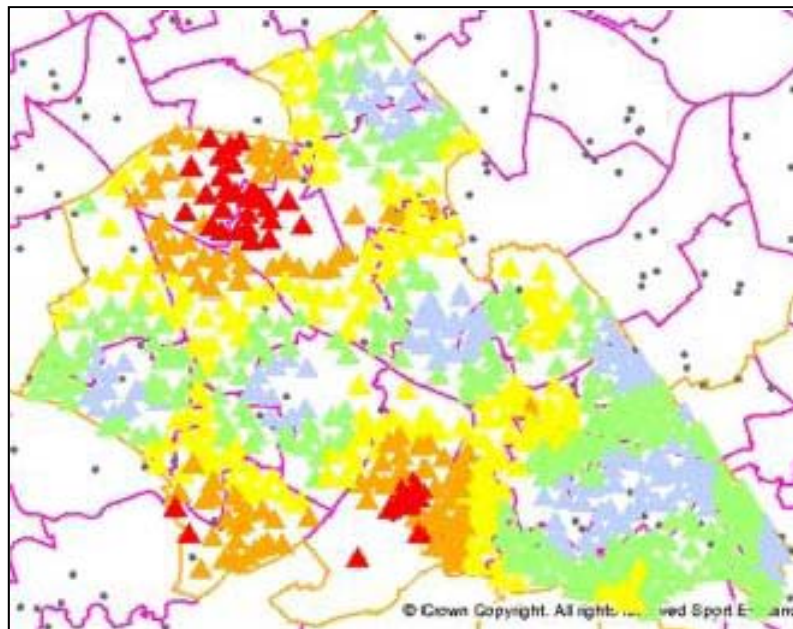
London Borough of Brent Participation (3 x 30) Estimates by Middle Super Output Area (MSOA)



2

Facilities Improvement Service (FIS)

- London Borough of Brent



Facilities Improvement Service (FIS)

- Swindon Borough Council

- Pilot Authority
- Infrastructure requirements up to 2026 (pop increase of approx. 70k).
- Major development areas to the south and east of the Borough.
- Use of the Facilities Planning Model for scenario testing.
- Assessing changes in supply/demand and affect on walking catchments.
- Use of tools to supplement existing work (Leisure Strategy).
- Incorporating requirements into the Local Development Framework.
- Up date Developer Contributions Guidance Note.
- Matching known infrastructure requirements to opportunities for co location (BSF and extended schools agenda).

Facilities Improvement Service (FIS)

- Southampton City Council

- Identified cross authority requirement for robust needs and evidence base.
- Inform the development of the Local Development Framework (Inc. SPD).
- Maximise opportunities to influence Building Schools for the Future (Strategy for Change Document).
- Inform the process of externalising the management arrangements of SCC facilities.

- Cross authority steering group and 'Active Southampton'.
- Consultants appointed to 'plug the gaps' in the evidence base and apply strategic planning tools.
- New Playing Pitch Strategy – part funded by Leisure and Education.

Facilities Improvement Service (FIS)

- Toolkit

- 81 LA's engaged in the service benefitting from direct support
- Resource for the remaining LA's to access.
- Lessons learnt, examples of good practice.

- The Policy Context
- Diagnosing and Scoping
- Filling the Gaps
- Application of Strategic Planning Tools
- Producing a Needs & Evidence Base for Community Sports Facilities
- Project Management
- The Strategy Process

Sustainable Community Sports Hubs

- Overcoming pressures on local authority resources, expenditure, subsidies.
- Working with all sectors and other funding streams.
- Securing the long term financial sustainability of sports facilities.

- Strategic Planning – requirements, prioritising, planning system (AAP, s106)
- Co-location of services, mix of public and private sector provision.
- The creation of a dowry (inc. commercial and other rental opportunities).
- Reduce operating subsidies by generating sufficient income streams.
- Building up ring fenced funds for lifecycle costs.

- Warrington Example – Orford Park.

Planning Contributions Kitbag

What's in the Kitbag?

- Planning Contributions: what are they?
(Circular 05/05, DCLG Guidance, Community Investment Levy Proposals)
- Developing local frameworks (5 part process)
 1. Local Standards of Provision and infrastructure requirements
 2. Approved development plan policies
 3. Local Framework (SPD)
 4. Team approach to negotiation
 5. Transparency and accountability
- Good practice and local authority examples
(SPD's, site level examples, costings, sports facility calculator)

Web Links & Contact Details

Guidance Documents:

Facilities Improvement Service, Sustainable Community Sports Hubs, Planning Contributions Kitbag.

www.sportengland.org > Facilities & Planning > Planning Tools and Guidance

London Borough of Brent:

'Planning for Sport and Active Recreation Facilities Strategy' 2008 – 2021

www.brent.gov.uk/tps.nsf/Planning%20policy/LBB-126

Warrington Borough Council: Orford Park Project (Sustainable Community Sports Hub)

www.warrington.gov.uk/Leisureandculture/Communitycentresandfacilities/orford.aspx

Contact Details:

John Feetam

Strategic Planner

T: 020 7273 1738,

E: john.feetam@sportengland.org